

## Release Notes

---

### Scope

Required for all Sensys Networks customers interested in the new functionality and bug fixes incorporated in TrafficDOT 2.18.0. In addition, we are releasing a Read-Only Viewer version of TrafficDot Application for the first time.

### What's in this Release?

#### Bug Fixes

#### Update TD Executable name to include version [15302]

Traffic DOT executables now include the release version in the filename.

For example:

TD2Setup\_2\_18\_0\_19.exe

TDVSetup\_2\_18\_0\_19.exe

#### New Functionality

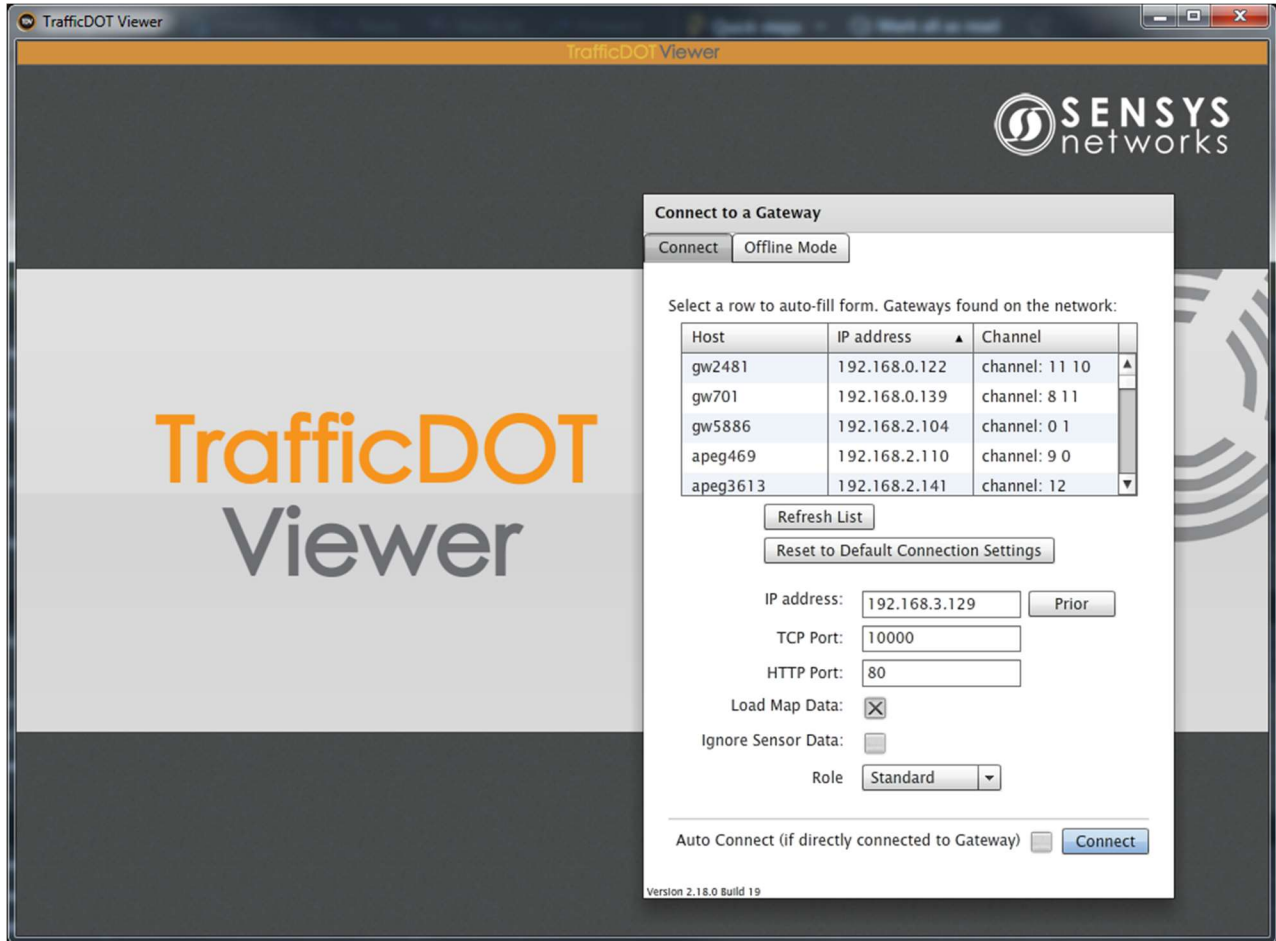
A new version of TrafficDOT has been released that provides a Read-Only Viewer Capability. By using this viewer, users can check all functionality of TrafficDOT, except for having the ability to update any parameter or save. This version can be helpful for training as well as for visualization of configuration parameters without having to worry about making erroneous updates.

The following screenshots provide an idea on how View appears different from exiting TrafficDOT application.

### Disclaimer

This information is furnished for informational use only, is subject to change without notice, and should not be construed as a commitment by Sensys Networks, Inc. Sensys Networks, Inc. assumes no responsibility or liability for any errors or inaccuracies that may appear in this document or any software that may be provided in association with this document. Except as permitted by such license, no part of this document may be reproduced, stored in a retrieval system, or transmitted in any form or by any means without the express written consent of Sensys Networks, Inc.

## VDS240 Wireless Vehicle Detection System TrafficDOT 2.18.0

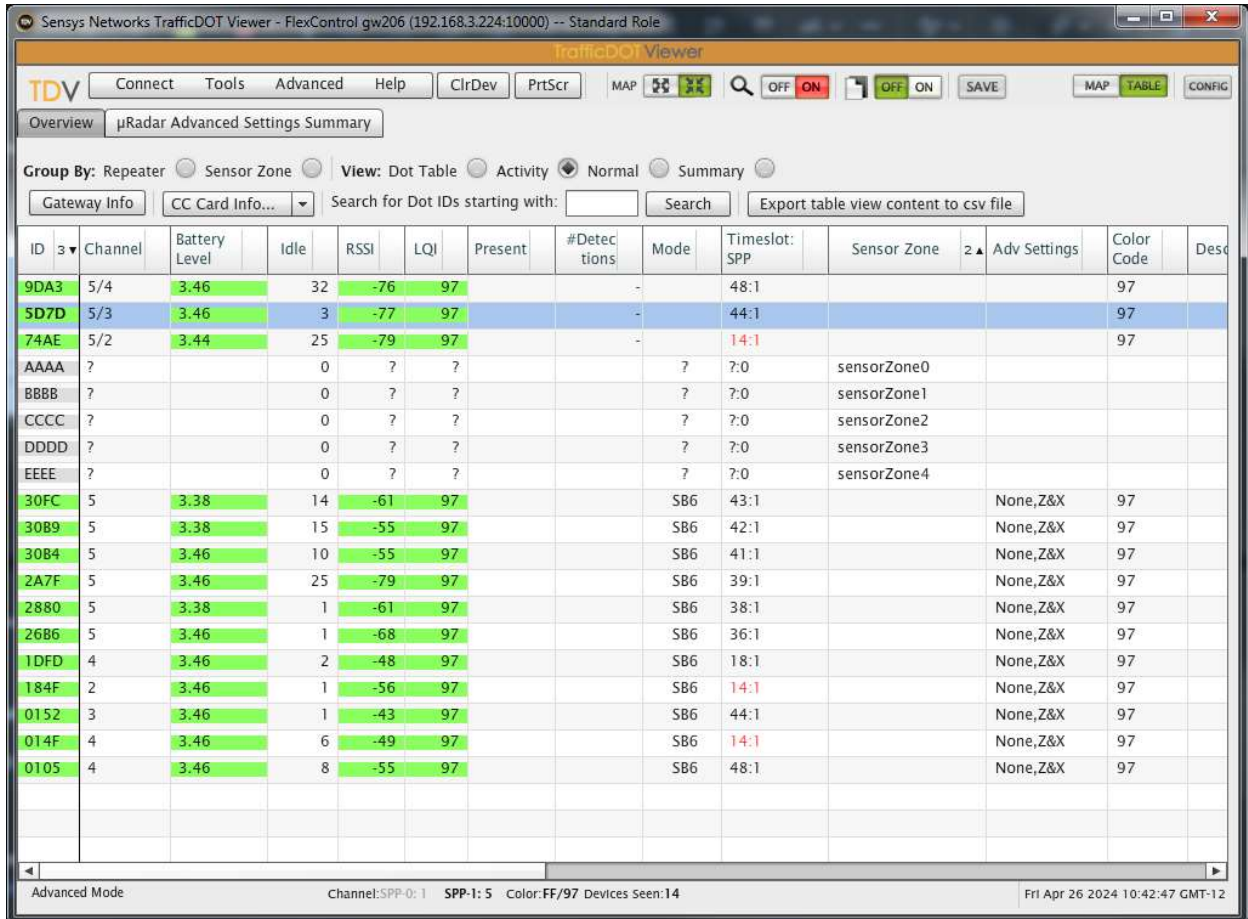


*Fig 1: The Initial Connection Page.*

### Disclaimer

This information is furnished for informational use only, is subject to change without notice, and should not be construed as a commitment by Sensys Networks, Inc. Sensys Networks, Inc. assumes no responsibility or liability for any errors or inaccuracies that may appear in this document or any software that may be provided in association with this document. Except as permitted by such license, no part of this document may be reproduced, stored in a retrieval system, or transmitted in any form or by any means without the express written consent of Sensys Networks, Inc.

## VDS240 Wireless Vehicle Detection System TrafficDOT 2.18.0



The screenshot shows the TrafficDOT Viewer application window. At the top, there is a banner that reads "TrafficDOT Viewer". Below the banner is a menu bar with options: TDV, Connect, Tools, Advanced, Help, ClrDev, PrtScr, MAP, and several status indicators (OFF, ON, SAVE). Below the menu bar are tabs for Overview, μRadar, Advanced Settings, and Summary. The main interface includes a "Group By" section with radio buttons for Repeater, Sensor Zone, View, Dot Table, Activity, Normal, and Summary. There is also a search bar for "Search for Dot IDs starting with:" and an "Export table view content to csv file" button.

ID	Channel	Battery Level	Idle	RSI	LQI	Present	#Detections	Mode	Timeslot: SPP	Sensor Zone	Adv Settings	Color Code	Desc
9DA3	5/4	3.46	32	-76	97		-		48:1			97	
SD7D	5/3	3.46	3	-77	97		-		44:1			97	
74AE	5/2	3.44	25	-79	97		-		14:1			97	
AAAA	?		0	?	?			?	7:0	sensorZone0			
BBBB	?		0	?	?			?	7:0	sensorZone1			
CCCC	?		0	?	?			?	7:0	sensorZone2			
DDDD	?		0	?	?			?	7:0	sensorZone3			
EEEE	?		0	?	?			?	7:0	sensorZone4			
30FC	5	3.38	14	-61	97			SB6	43:1		None,Z&X	97	
30B9	5	3.38	15	-55	97			SB6	42:1		None,Z&X	97	
30B4	5	3.46	10	-55	97			SB6	41:1		None,Z&X	97	
2A7F	5	3.46	25	-79	97			SB6	39:1		None,Z&X	97	
2880	5	3.38	1	-61	97			SB6	38:1		None,Z&X	97	
2686	5	3.46	1	-68	97			SB6	36:1		None,Z&X	97	
1DFD	4	3.46	2	-48	97			SB6	18:1		None,Z&X	97	
184F	2	3.46	1	-56	97			SB6	14:1		None,Z&X	97	
0152	3	3.46	1	-43	97			SB6	44:1		None,Z&X	97	
014F	4	3.46	6	-49	97			SB6	14:1		None,Z&X	97	
0105	4	3.46	8	-55	97			SB6	48:1		None,Z&X	97	

At the bottom of the window, there is a status bar showing "Advanced Mode", "Channel:SPP-0:1 SPP-1:5", "Color:FF/97", "Devices Seen:14", and the date/time "Fri Apr 26 2024 10:42:47 GMT-12".

Fig 2: TD Viewer shows a banner near the top of the application, showing the user that they are using TrafficDOT Viewer:

### Disclaimer

This information is furnished for informational use only, is subject to change without notice, and should not be construed as a commitment by Sensys Networks, Inc. Sensys Networks, Inc. assumes no responsibility or liability for any errors or inaccuracies that may appear in this document or any software that may be provided in association with this document. Except as permitted by such license, no part of this document may be reproduced, stored in a retrieval system, or transmitted in any form or by any means without the express written consent of Sensys Networks, Inc.

## VDS240 Wireless Vehicle Detection System TrafficDOT 2.18.0

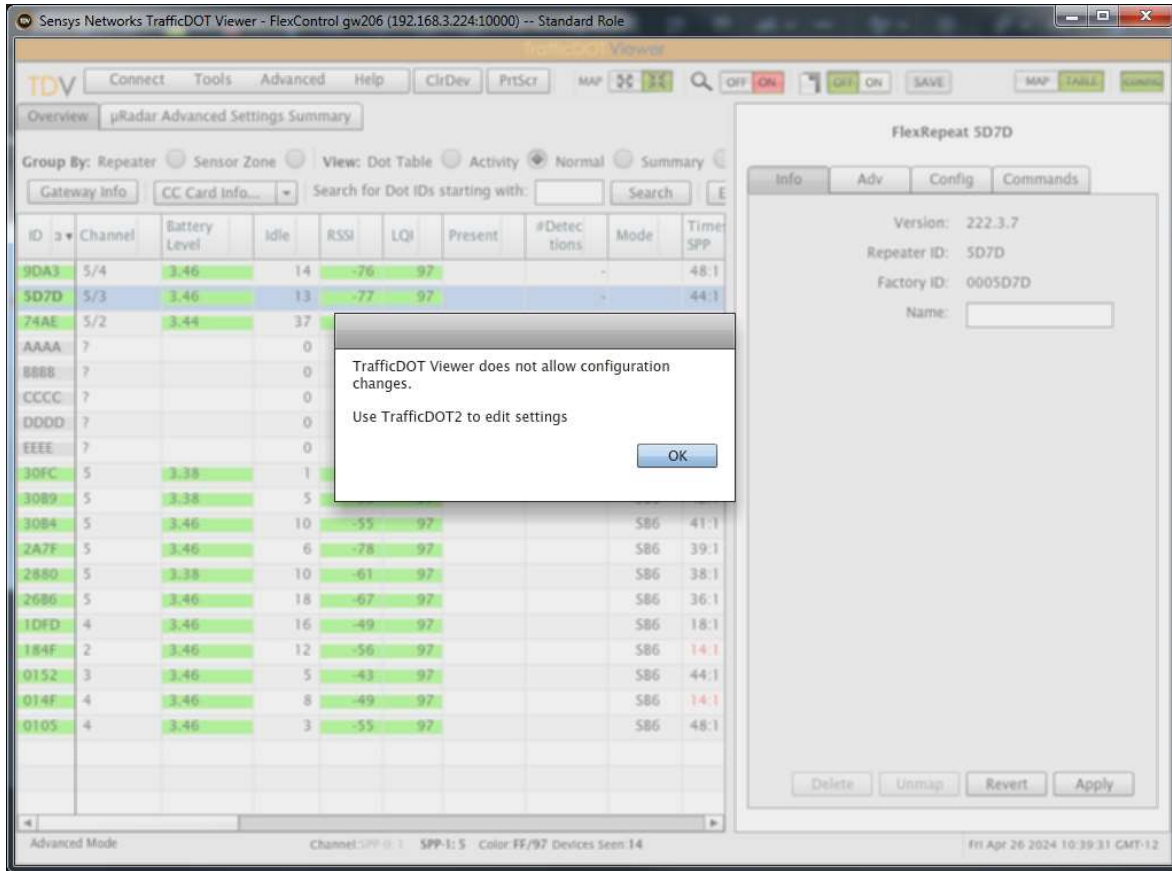


Figure 3: TD Viewer shows a message to the user after the user tries to make a configuration change

### Disclaimer

This information is furnished for informational use only, is subject to change without notice, and should not be construed as a commitment by Sensys Networks, Inc. Sensys Networks, Inc. assumes no responsibility or liability for any errors or inaccuracies that may appear in this document or any software that may be provided in association with this document. Except as permitted by such license, no part of this document may be reproduced, stored in a retrieval system, or transmitted in any form or by any means without the express written consent of Sensys Networks, Inc.